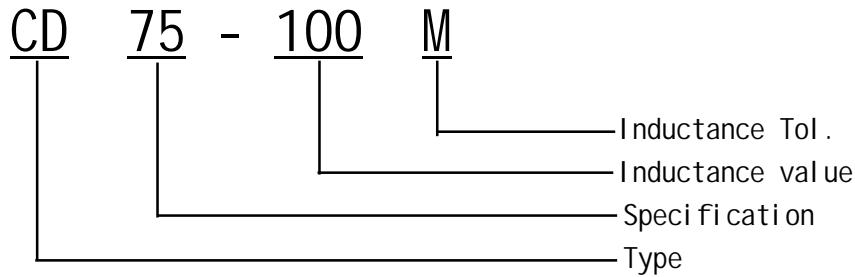


SMD Power Inductors CD75 Series

贴片功率电感CD75 系列

I. Ordering Code:

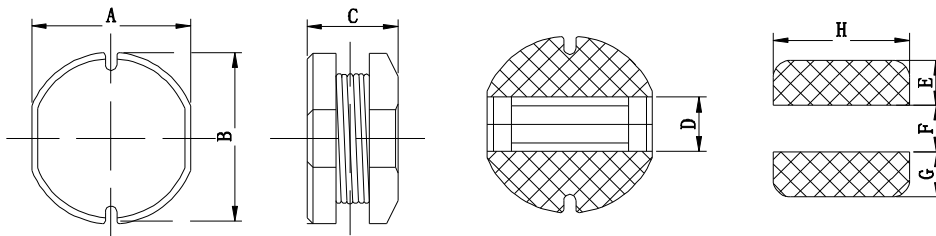
Beindart



※ Inductance Tol. J: $\pm 5\%$, K: $\pm 10\%$, M: $\pm 20\%$, N: $\pm 30\%$.

※ Inductance value. 1R0: 1.0uH, 100: 10uH, 101: 100uH, 102: 1000uH.

II. Configuration & Dimensions: (mm)



Size	A	B	C(max)	D	E	F	G	H
CD75	7.00 \pm 0.30	7.80 \pm 0.30	5.20	2.50	3.00	2.00	3.00	7.50

III. Materials :

- Core: Ferrite DR core
- Wire: Enamelled copper wire
- Terminal: Cu/Sn
- Encapsulate: Epoxy novolac molding compound
- Remark: Products comply with RoHS' requirements

IV. General Specification :

- Storage temp. : -40 $^{\circ}$ C----+125 $^{\circ}$ C
- Operating : -40 $^{\circ}$ C----+105 $^{\circ}$ C
- Temp. rise : 40 $^{\circ}$ C Max. at rated current.

CD75 Series

Part No.	L (uH)	Test Freq .(KHZ)	Tolerance	D.C.R(Ω)	Rated Current
				MAX	(A)
CD75-1R0N	1.00	100K/0.25V	$\pm 30\%$	13.0m	5.20
CD75-2R7M	2.70	100K/0.25V	$\pm 30\%$	16.9m	4.60
CD75-3R3M	3.30	100K/0.25V	$\pm 30\%$	19.5m	4.00
CD75-3R9M	3.90	100K/0.25V	$\pm 30\%$	23.4m	4.00
CD75-4R7M	4.7	100K/0.25V	$\pm 20\%$	26.0m	3.80
CD75-5R6M	5.6	100K/0.25V	$\pm 20\%$	27.3m	3.10
CD75-6R8M	6.8	100K/0.25V	$\pm 20\%$	32.5m	2.80
CD75-8R2M	8.2	100K/0.25V	$\pm 20\%$	39.0m	2.52
CD75-100M	10.0	1.0K/0.25V	$\pm 20\%$	41.6m	2.31
CD75-120M	12.0	1.0K/0.25V	$\pm 20\%$	49.4m	2.00
CD75-150M	15.0	1.0K/0.25V	$\pm 20\%$	71.5m	1.81
CD75-180M	18.0	1.0K/0.25V	$\pm 20\%$	84.5m	1.59
CD75-220M	22.0	1.0K/0.25V	$\pm 20\%$	91.0m	1.50
CD75-270M	27.0	1.0K/0.25V	$\pm 20\%$	0.107	1.28
CD75-330M	33.0	1.0K/0.25V	$\pm 20\%$	0.120	1.20
CD75-390M	39.0	1.0K/0.25V	$\pm 20\%$	0.150	1.08
CD75-470M	47.0	1.0K/0.25V	$\pm 20\%$	0.176	1.05
CD75-560M	56.0	1.0K/0.25V	$\pm 20\%$	0.208	0.930
CD75-680M	68.0	1.0K/0.25V	$\pm 20\%$	0.234	0.830
CD75-820M	82.0	1.0K/0.25V	$\pm 20\%$	0.273	0.780
CD75-101M	100.0	1.0K/0.25V	$\pm 20\%$	0.325	0.730
CD75-121M	120.0	1.0K/0.25V	$\pm 20\%$	0.390	0.650
CD75-151M	150.0	1.0K/0.25V	$\pm 20\%$	0.520	0.580
CD75-181M	180.0	1.0K/0.25V	$\pm 20\%$	0.598	0.510
CD75-221K	220.0	1.0K/0.25V	$\pm 10\%$	0.793	0.480
CD75-271K	270.0	1.0K/0.25V	$\pm 10\%$	0.884	0.400
CD75-331K	330.0	1.0K/0.25V	$\pm 10\%$	1.13	0.390
CD75-391K	390.0	1.0K/0.25V	$\pm 10\%$	1.30	0.350
CD75-471K	470.0	1.0K/0.25V	$\pm 10\%$	1.68	0.330
CD75-561K	560.0	1.0K/0.25V	$\pm 10\%$	1.90	0.300
CD75-681K	680.0	1.0K/0.25V	$\pm 10\%$	2.47	0.270

VI. 额定电流 Reted Current:

电感值下降至初始值的10%或温度上升至40℃时的直流电流值中的最小值。(环境温度20℃)

This indicates the value of current when the inductance is 10% lower than its initial value at D.C. superposition or D.C. current when T=40℃ whichever is lower. (Ta=20℃)

VII. 无铅制品 Lead-free

VIII. 测试仪器 Test instrument : HP4284A, 502BC, CH1062A.